

PROFILE OF PADDINGTON HALL

COMMUNIFY QLD VENUES FOR HIRE

180 Jubilee Terrace, Bardon Qld 4065
t: (07) 3510 2717 f: (07) 3366 7845
e: venuesforhire@communify.org.au

Conveniently located close to the Suncorp stadium and the Milton Railway station, Paddington Hall is fully fenced with a small stage. Adjacent to a large park with a children's playground this hall is suitable for groups with children looking for a safe venue; group meetings, workshops or classes.

VENUE DETAILS

LOCATION

10 Moreton St, Paddington

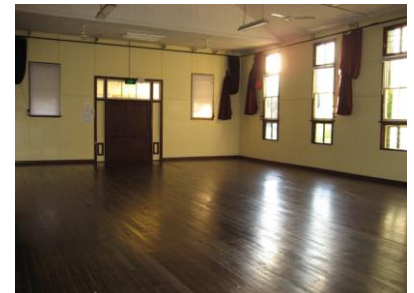
DIMENSIONS

Floor: TBA

FACILITIES

Kitchen: New kitchen and bathrooms to be installed August 2008.

General: TBA



ACCESS & PARKING

- o There is parking available along Moreton Street.
- o Please give consideration to neighbours; no amplified noise after 10.30 pm.

HIRE RATES (INC GST)

Full Day:	Minimum booking 8 hours	\$130.00
Half Day/Evening Hire:	Minimum booking 4 hours	\$65.00
Hourly:	Permanent bookings	\$17.50
	Casual bookings	\$25.00
	Not for Profit*	\$10.00

(*Community Groups, organizations or individuals providing a community service)

TO MAKE A BOOKING

If you would like to view any of the Communify Qld venues, please visit our office at 180 Jubilee Terrace, Bardon to collect a key. A key/cleaning deposit is applicable when viewing or booking this venue. To secure a booking, a completed Venue Hire

ENQUIRIES

VENUES ADMINISTRATION

Communify Qld
180 Jubilee Tce, Bardon Qld 4065
T: 3510 2717
F: 3366 7845
E: venuesforhire@communify.org.au