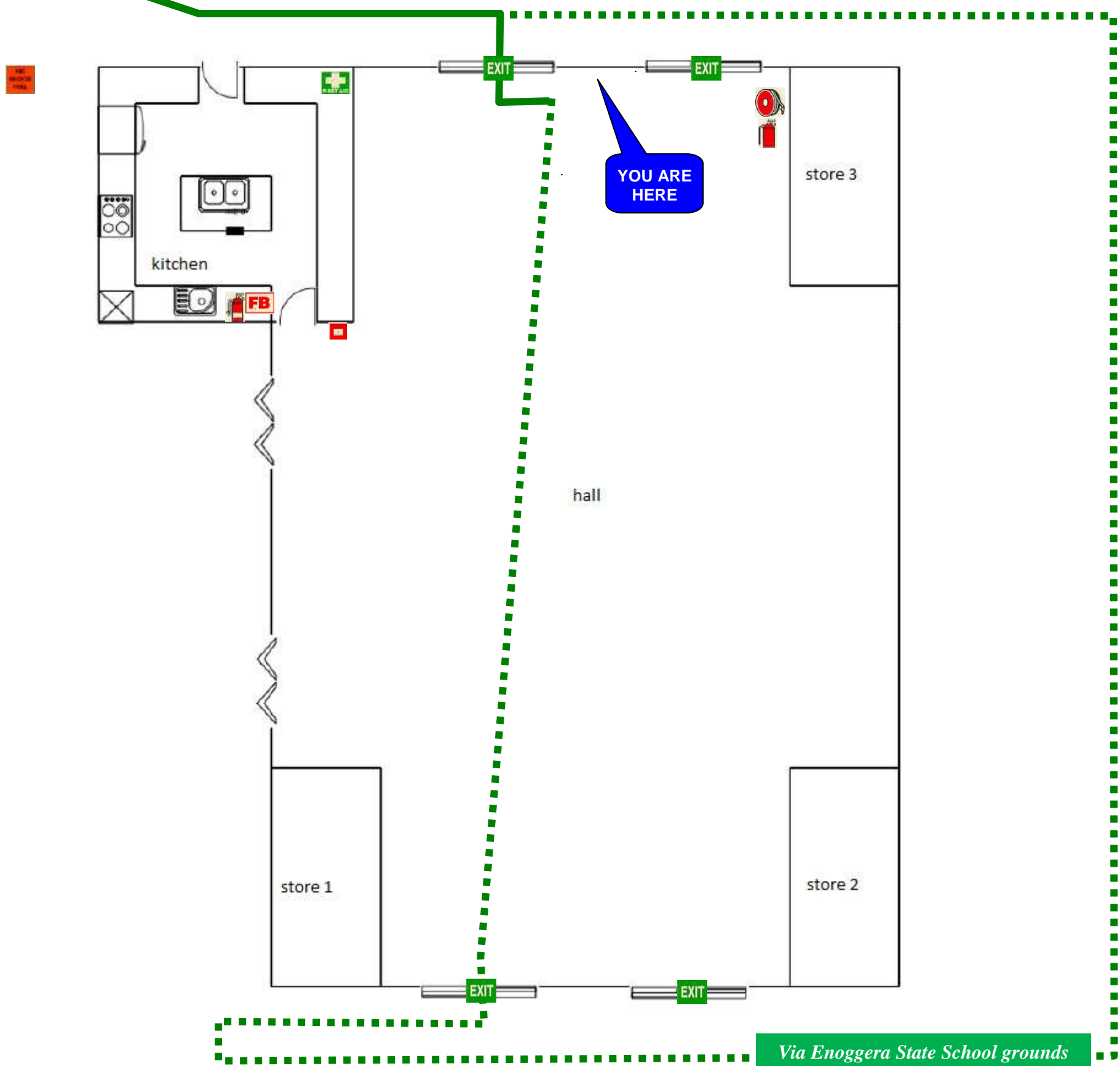


EVACUATION SIGN and DIAGRAM

Emmanuel Uniting Church

AA
Laurel Street



Via Enoggera State School grounds

EVACUATION PROCEDURES

STAGE 1:- Removal of people from the immediate Danger Area

Occupants and staff in the immediate danger area are to assemble a safe distance away from the fire and smoke. When the area has been evacuated all doors and windows should be closed to contain fire.

STAGE 2:- Removal to a Safe Area

If the severity of the smoke or fire warrants further evacuation, occupants should be moved through fire/smoke doors to a safe area.

STAGE 3:- Complete Evacuation of Entire Complex

Should the emergency necessitate evacuation of the whole building, the Manager or the Fire Service will direct occupants from the safe place to the **ASSEMBLY AREA**.

STAGE 4:- Roll Call.

To be conducted as soon as possible and to ensure all Persons are accounted for. Report all missing persons to **FIRE OFFICERS**.

IN CASE OF FIRE

REMOVE PEOPLE
from immediate danger

ALERT THE FIRE SERVICE

- break manual call point
- call 000

CONFINE FIRE & SMOKE
close doors and windows (if safe to do so)

EVACUATE
to the ASSEMBLY AREA

| | | | |
|--|-------------------|--|----------------------|
| | FIRE HOSE REEL | | FIRE INDICATOR PANEL |
| | EXIT | | PATH OF EXIT |
| | MANUAL CALL POINT | | MAIN PATH |
| | EXTINGUISHER | | ALTERNATE PATH |
| | FIRE BLANKET | | SWITCH BOARD |
| | ASSEMBLY AREA | | FIRST AID |

Mobility impaired persons should evacuate immediately on hearing the fire alarm assisted by a nominated person.



000
EMERGENCY
In an emergency dial 000