

EVACUATION DIAGRAM

first 5 minutes

Experience makes all the difference.



Phone: 1300 321 120
Website: first5minutes.com.au

Issue Date: 9 October 2014

(Valid for a period of 5 years)

Diagrams used on this sign are NOT to scale.

RESPONSE TO AN EMERGENCY

R.E.A.C.T™

RESPOND TO OR RAISE THE ALARM

You should always Respond to or Raise the Alarm

EXAMINE

Examine what type of emergency you may be facing

ASSESS

Assess the risks to your life safety and that of others

CONTROL

Take control of the situation, act responsibly

TALK

Always Talk (Communicate) with all parties concerned



STAGES OF EVACUATION

Evacuation should be conducted in three distinct stages depending on the severity of the incident.

STAGE 1 - REMOVAL OF PERSONS FROM THE IMMEDIATE DANGER AREA

Occupants are removed from the affected compartment into the next compartment, eg from a room into a corridor. Doors should be closed to confine smoke and fire in the affected compartment.

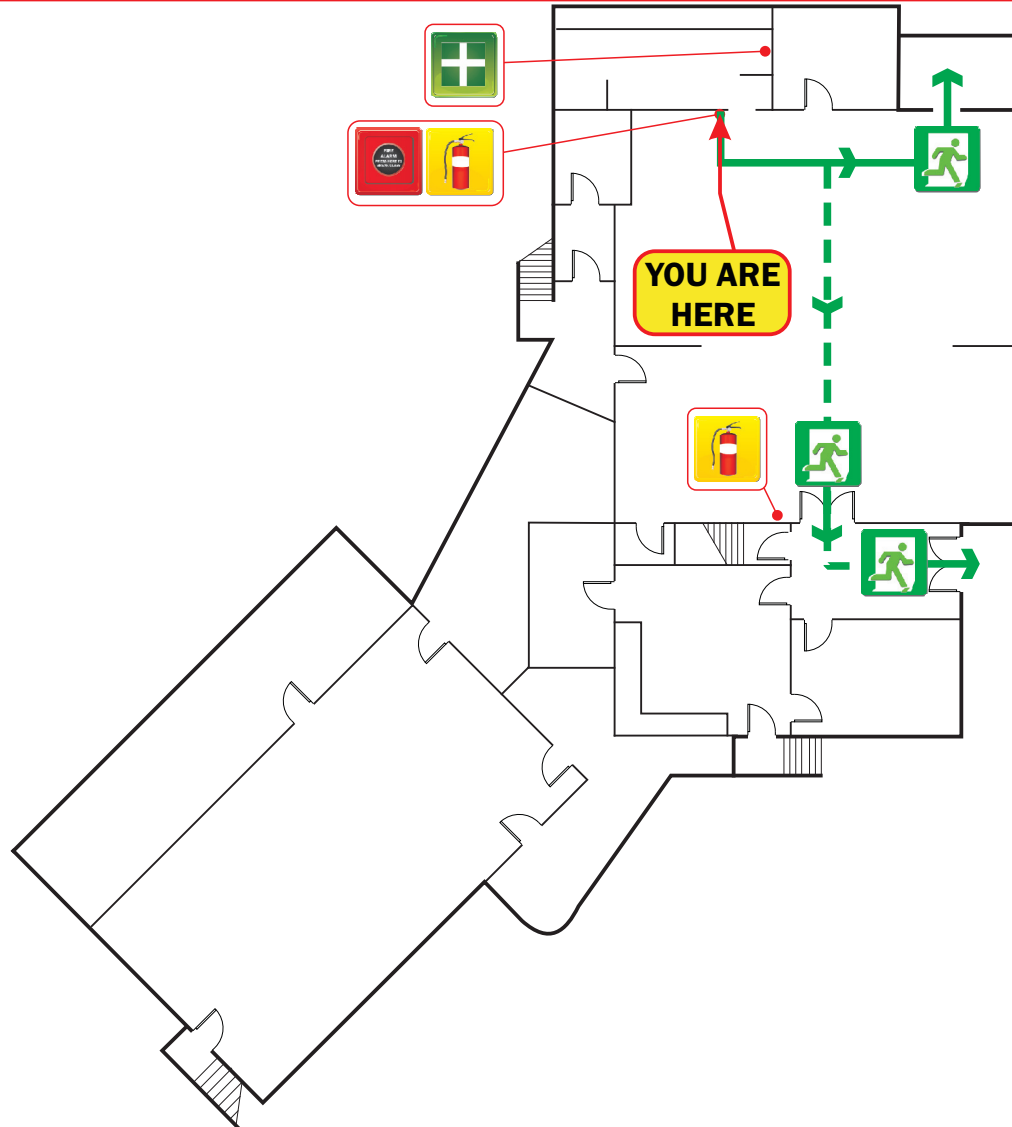
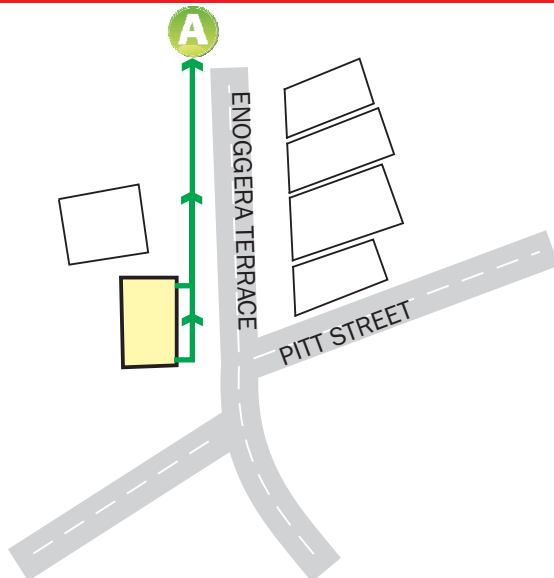
STAGE 2 - REMOVAL TO A SAFE AREA

If the severity of smoke or heat warrants further evacuation, occupants and visitors should be moved to safe areas on the same level.

STAGE 3 - COMPLETE EVACUATION OF THE FLOOR

Should the emergency necessitate evacuation of the affected floor, Wardens are to direct occupants to the assembly area via the emergency exits.

ASSEMBLY AREA



FLOOR DIAGRAM

ITHACA HALL - 95 ENOGGERA TERRACE, REDHILL



MANUAL CALL POINT



DRY CHEMICAL POWDER FIRE EXTINGUISHER



FIRST AID KIT



ASSEMBLY AREA



EXIT ROUTE



ALTERNATIVE EXIT ROUTE



EMERGENCY EXIT

EVACUATION DIAGRAM

first 5 minutes

Experience makes all the difference.



Phone: 1300 321 120
Website: first5minutes.com.au

Issue Date: 9 October 2014

(Valid for a period of 5 years)

Diagrams used on this sign are NOT to scale.

RESPONSE TO AN EMERGENCY

R.E.A.C.T™

RESPOND TO OR RAISE THE ALARM

You should always Respond to or Raise the Alarm

EXAMINE

Examine what type of emergency you may be facing

ASSESS

Assess the risks to your life safety and that of others

CONTROL

Take control of the situation, act responsibly

TALK

Always Talk (Communicate) with all parties concerned



STAGES OF EVACUATION

Evacuation should be conducted in three distinct stages depending on the severity of the incident.

STAGE 1 - REMOVAL OF PERSONS FROM THE IMMEDIATE DANGER AREA

Occupants are removed from the affected compartment into the next compartment, eg from a room into a corridor. Doors should be closed to confine smoke and fire in the affected compartment.

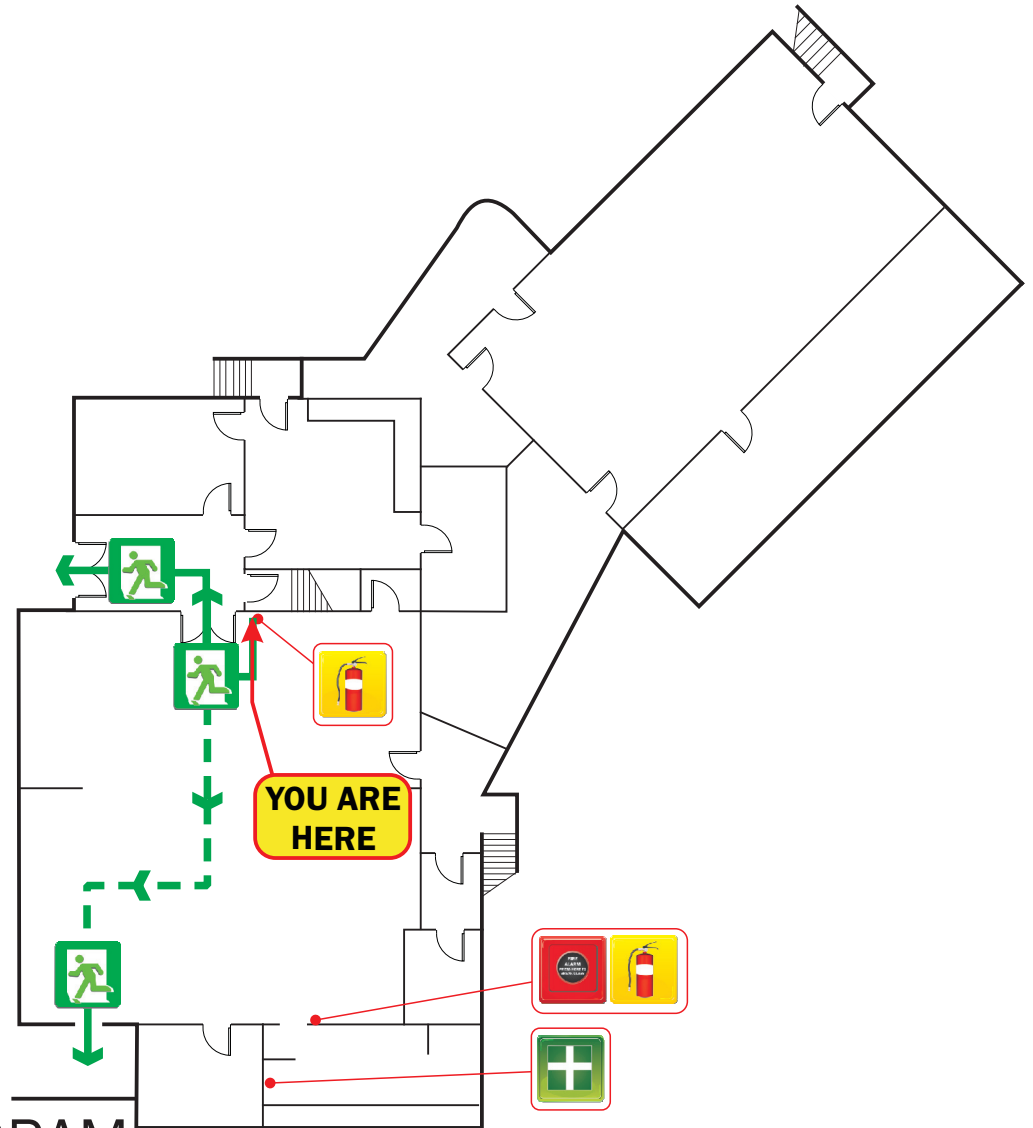
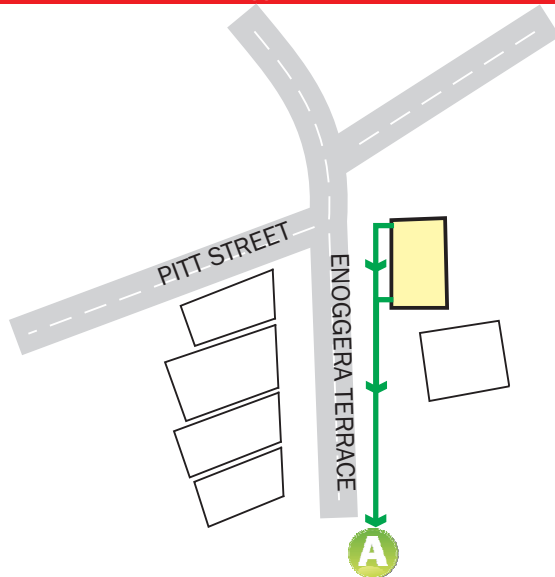
STAGE 2 - REMOVAL TO A SAFE AREA

If the severity of smoke or heat warrants further evacuation, occupants and visitors should be moved to safe areas on the same level.

STAGE 3 - COMPLETE EVACUATION OF THE FLOOR

Should the emergency necessitate evacuation of the affected floor, Wardens are to direct occupants to the assembly area via the emergency exits.

ASSEMBLY AREA



FLOOR DIAGRAM

ITHACA HALL - 95 ENOGGERA TERRACE, REDHILL



MANUAL CALL POINT



DRY CHEMICAL POWDER FIRE EXTINGUISHER



FIRST AID KIT



ASSEMBLY AREA



EXIT ROUTE



ALTERNATIVE EXIT ROUTE



EMERGENCY EXIT