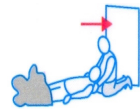


EVACUATION INSTRUCTIONS

- * Follow instructions of the fire warden/s or person in charge
- * Remain Calm – move quickly but don't run
- * Leave immediately via the nearest safe exit, if possible take mobility impaired person/s and visitors with you
- * If possible close doors and windows behind you
- * Report to Fire Warden at Assembly Area
- * Immediately advise a warden if you suspect or know that somebody may still be in the building
- * Report to a First Aid Officer if you or anyone else is injured
- * Remain at the Assembly Area until the Chief Fire Wardens instructs otherwise

IN CASE OF FIRE DIAL 000 IMMEDIATELY



Remove persons in immediate danger



000

Alert Wardens and call Queensland Fire and Rescue Service on 000



Confine the spread by closing doors and windows behind you



Extinguish the fire if safe to do so.

EXTINGUISHER OPERATION

OPERATING YOUR FIRE EXTINGUISHER



PULL THE PIN



AIM AT THE BASE



SQUEEZE TRIGGER



SWEEP

Remember:

- Test extinguisher before approaching the fire
- Keep low & approach with the wind at your back
- Back away, watching for rekindle

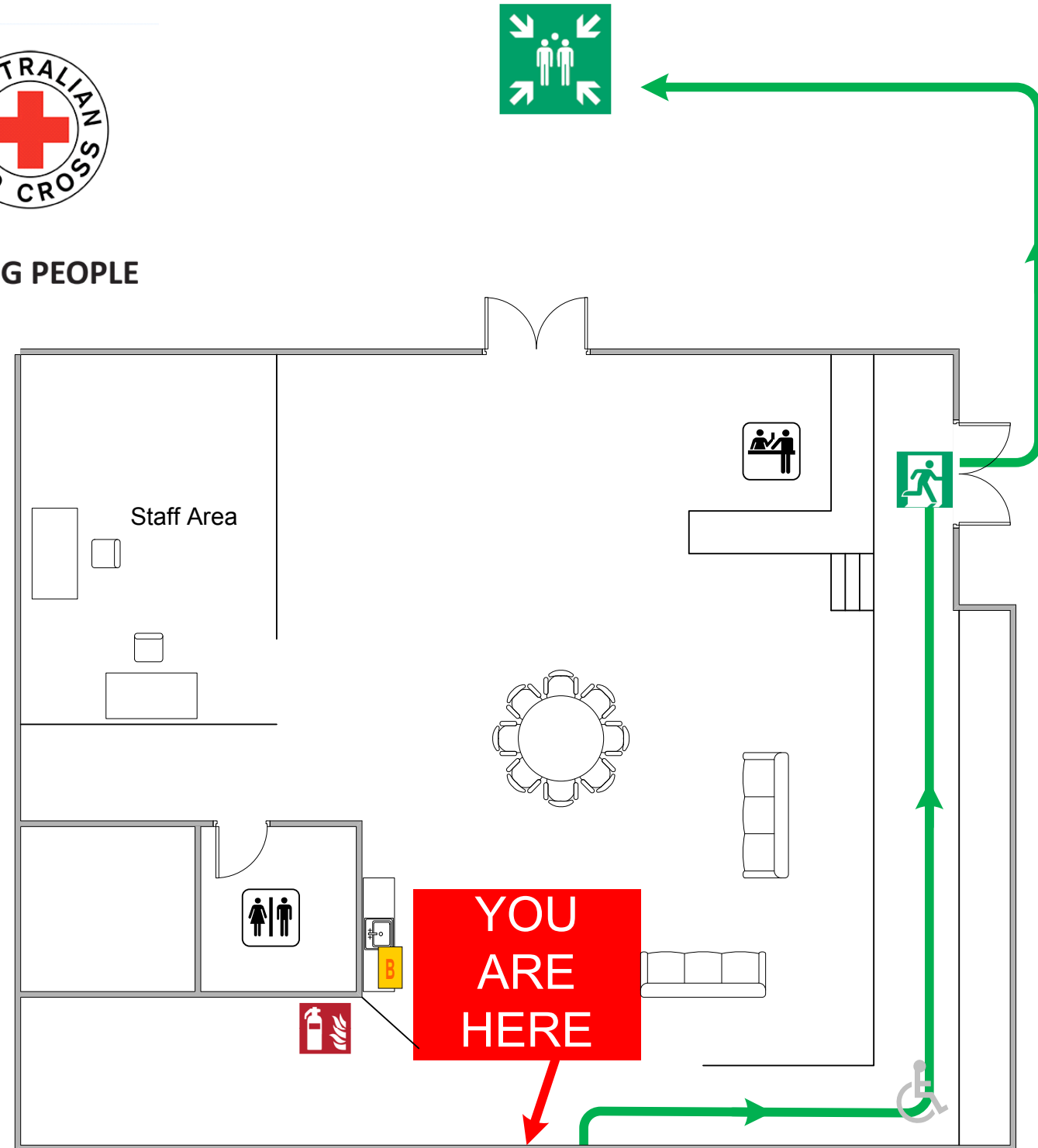
EVACUATION DIAGRAM

Australian Red Cross- 12 Jeays Street, Bowen Hills

the power of humanity



100 YEARS
PEOPLE HELPING PEOPLE
1914-2014



LEGEND



FIRE EXTINGUISHER



FIRE HOSE REEL



FIRE BLANKET



PATH OF EXIT



EMERGENCY EXIT



ALTERNATIVE PATH OF EXIT



ASSEMBLY AREA