

# EVACUATION DIAGRAM

**first 5 minutes**

Experience makes all the difference.



Phone: 1300 321 120

Website: first5minutes.com.au

Issue Date: 22 June 2016

(Valid for a period of 5 years)

Diagrams used on this sign are NOT to scale.

## RESPONSE TO AN EMERGENCY

### R.A.C.E

Whilst emergencies differ, the RACE procedure offers a set of immediate, generic responses which are easily memorised and appropriate in most circumstances. They are:

- R** REMOVE - If safe to do so, remove or assist any persons at immediate danger.
- A** ALERT - Notify appropriate personnel or contacting authority. This usually involves calling the Emergency Services and operating the nearest fire alarm.
- C** CONTAIN / CONTROL - Close doors, and if safe to do so, deal with the threat.
- E** EVACUATE / EXTRICATE - Remove all other persons from danger. Evacuate to the Assembly Area and remain there until advised otherwise by the Chief Warden.



## STAGES OF EVACUATION

Evacuation should be conducted in three distinct stages depending on the severity of the incident.

### STAGE 1 - REMOVAL OF PERSONS FROM THE IMMEDIATE DANGER AREA

Occupants are removed from the affected compartment into the next compartment, eg from a room into a corridor. Doors should be closed to confine smoke and fire in the affected compartment.

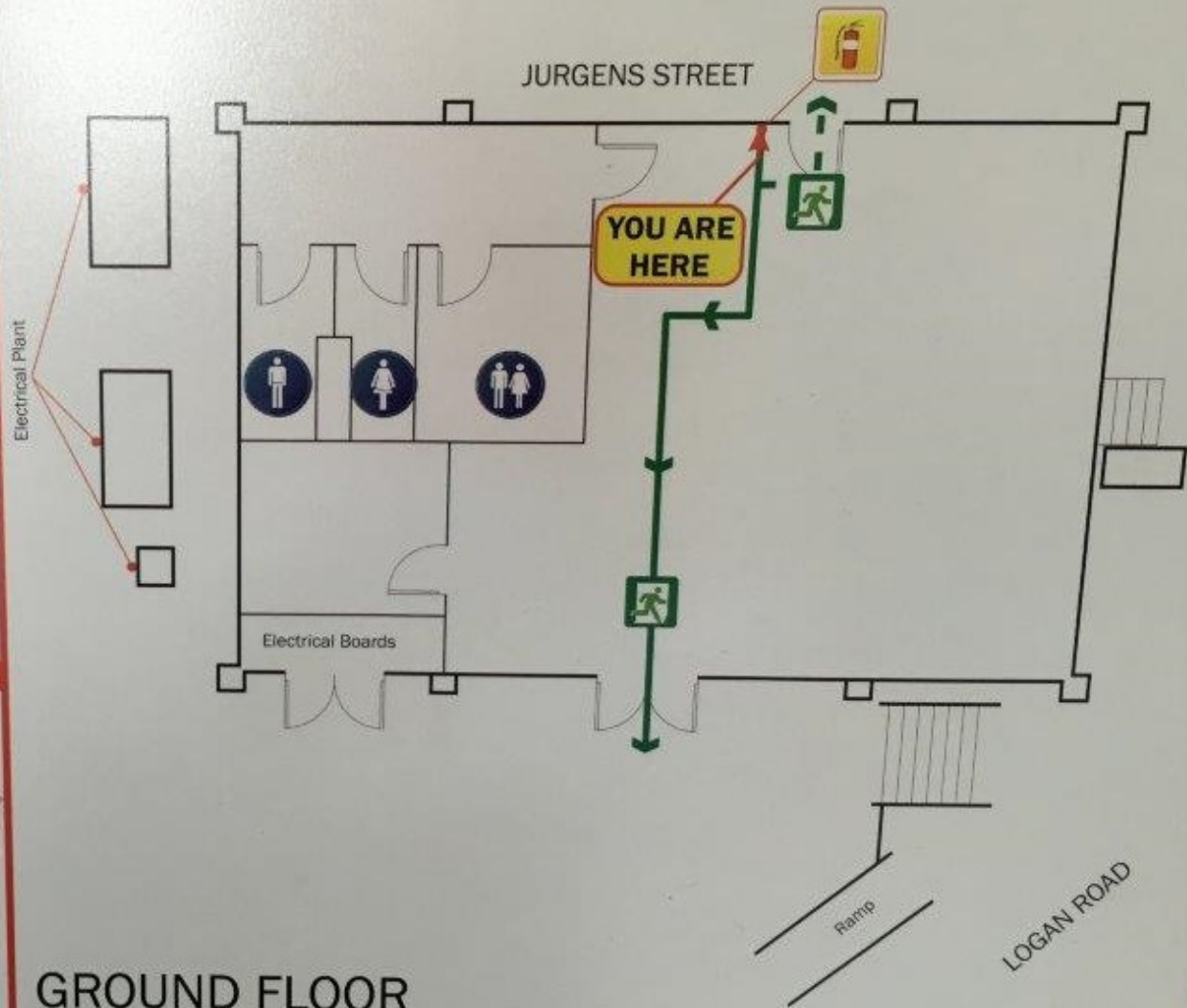
### STAGE 2 - REMOVAL TO A SAFE AREA

If the severity of smoke or heat warrants further evacuation, occupants and visitors should be moved to safe areas on the same level.

### STAGE 3 - COMPLETE EVACUATION OF THE FLOOR

Should the emergency necessitate evacuation of the affected floor, Wardens are to direct occupants to the assembly area via the emergency exits.

## ASSEMBLY AREA



## GROUND FLOOR

OLD WOOLLOONGABBA SUBSTATION NO. 5, 45 LOGAN ROAD, WOOLLOONGABBA

-   
DRY CHEMICAL POWDER  
OR FIRE EXTINGUISHER
-   
MASTER EMERGENCY  
COMMUNICATION POINT
-   
ASSEMBLY  
AREA
-   
EMERGENCY  
EXIT
-   
EXIT  
ROUTE
-   
ALTERNATIVE  
EXIT ROUTE